

PROJECT TITLE:

Пътен участък 1

Приземна средногодишна концентрация на прах (PM)
Директива (ЕС) 2024/2881

COMMENTS:

R1 - 0.16 $\mu\text{g}/\text{m}^3$
L1 - 0.18 $\mu\text{g}/\text{m}^3$
R2 - 0.13 $\mu\text{g}/\text{m}^3$
L2 - 0.15 $\mu\text{g}/\text{m}^3$
R3 - 0.16 $\mu\text{g}/\text{m}^3$
L3 - 0.09 $\mu\text{g}/\text{m}^3$

SOURCES:

8

RECEPTORS:

447

OUTPUT TYPE:

Concentration

MAX:

1.11 $\mu\text{g}/\text{m}^3$

COMPANY NAME:



LEGEND:

 Tunnel
 Road

DATE:

03/14/2026

SCALE:

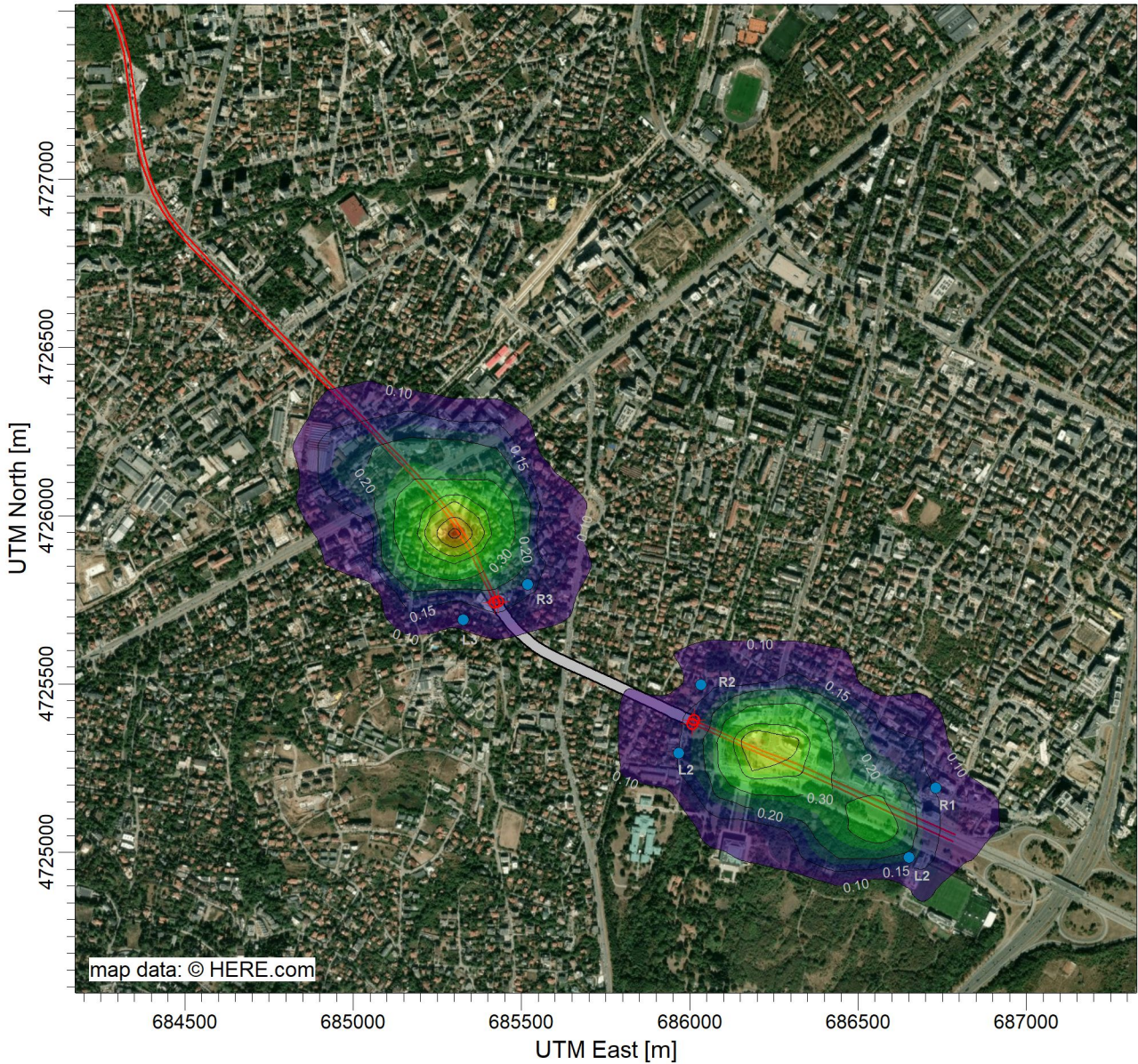
1:20,000

0

0.5 km

PROJECT NO.:

SOP_Air/EIA_2026



$\mu\text{g}/\text{m}^3$

Max: 1.11 [$\mu\text{g}/\text{m}^3$] at (685306.89, 4725950.30)

1.11

1.00

0.80

0.60

0.50

0.30

0.20

0.15

0.10